



**Medicatech VET<sup>®</sup>**  
A Medicatech Company

# Digital Handheld Color Doppler Veterinary Ultrasound Imaging System







Delivering non-invasive, real-time, and reliable diagnostic information, the system ensures fast and effortless operation. Powered by RealView, it provides an advanced imaging experience and innovative solutions to meet diverse diagnostic needs.



# Medicatech VET<sup>®</sup>

A Medicatech Company

## Versatility in your hand

			
Net weight $\leq$ 300g	Battery life > 4.5h	WiFi connection	USB charging

## People-oriented design empowers efficient diagnosis

### Micro-Convex



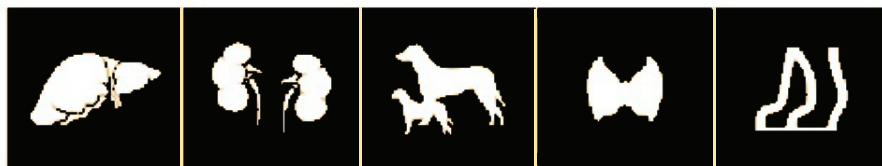
Pet ABD

Pet Kidney

Pet Repro

Pet Cardiac

### Linear



Pet ABD

Pet Kidney

Pet Repro

Small Parts

Tendon



High frame rate



In-plane/out-of-plane  
biopsy function



Remote archive sharing



User-friendly gestures





## Multiple Applications

### Micro-Convex

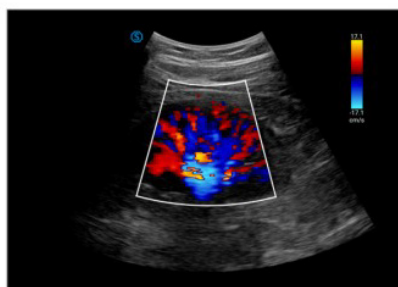
- Abdominal diagnosis of cats & small and medium-sized dogs, such as bladder, kidney, liver, gallbladder, gastrointestinal, reproduction, etc.
- Quick cardiac exam



**Cardiac**



**Kidney**



**Bladder**



**Spleen**

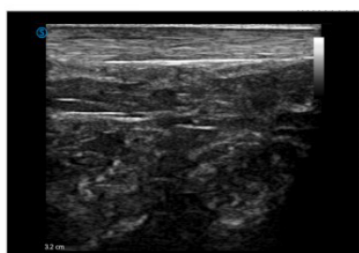


### Linear

- Horse tendon
- Superficial organs of cats and dogs: lumps, eyeballs, etc.
- Abdominal diagnosis for kittens & miniature dogs (<3kg)
- Rat diagnosis



**Tendon**



**Superficial lump**





T. +1 949-679-2881  
F. +1 949-679-2882



[www.medicattechvet.com](http://www.medicattechvet.com)



[Support@medicatechvet.com](mailto:Support@medicatechvet.com)